

# LYNN TOWNSHIP

Each township has six files containing six sections in each, and one file containing all 36 sections.

Lynn01to06.pdf  
Lynn07to12.pdf  
Lynn13to18.pdf  
Lynn19to24.pdf  
Lynn25to30.pdf  
Lynn31to36.pdf  
LynnAll36.pdf

The points are listed starting with the point above the SE corner and continuing in a counter-clockwise rotation around the section. This normally begins with the East point, Northeast, then North, but may also include Witness Corners, and/or Meander Corners.

## **Definitions**

**Witness Corner:** A witness corner “stands in” when the true corner cannot be monumented or occupied because of difficult terrain or obstruction of the corner sight. The witness corner must be on the section line and is usually 5 or 10 chains away from the true corner.

**Meander Corner:** The intersection of a township, range, or section line and the banks of a navigable stream or meandering body of water.

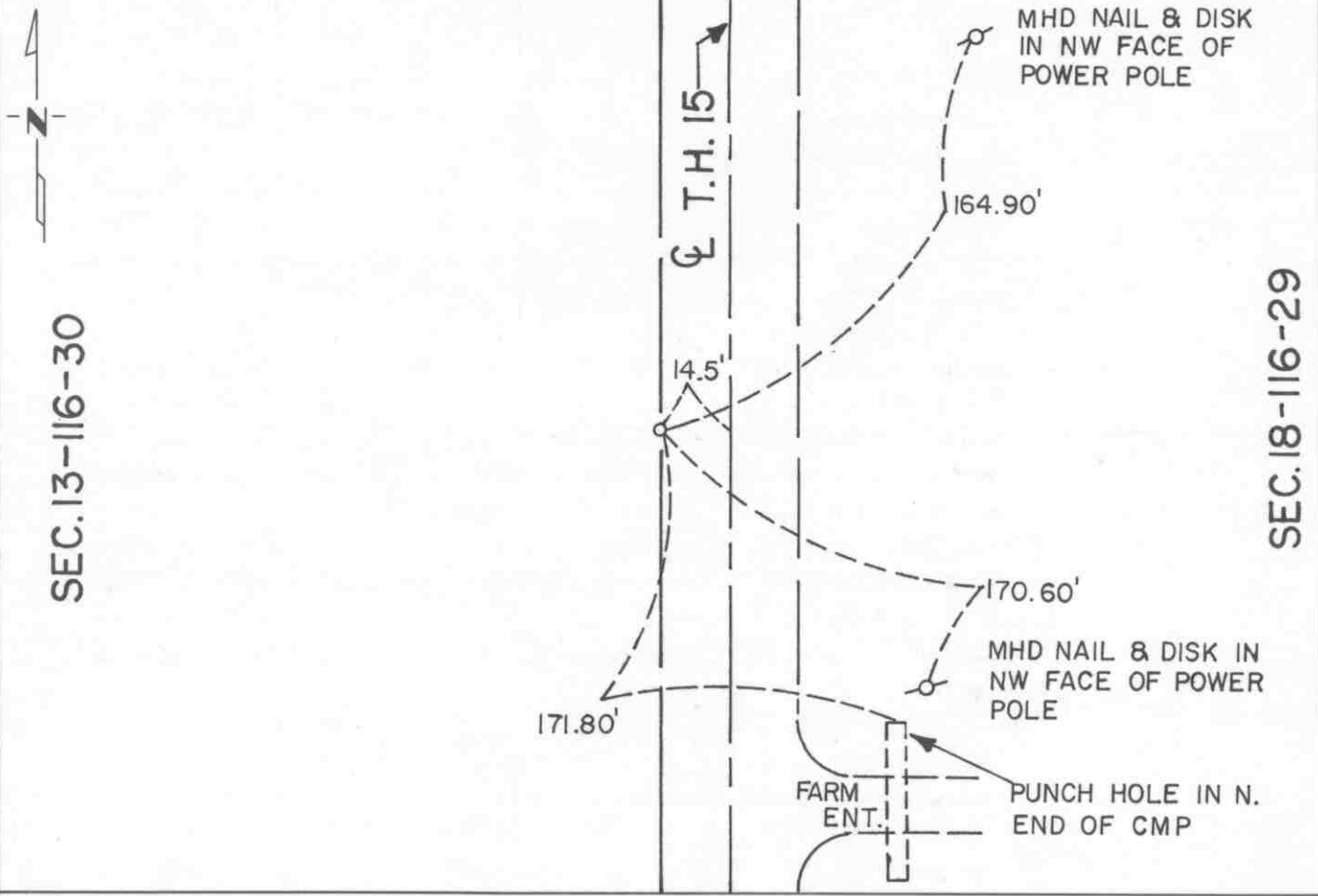
# CERTIFICATE OF LOCATION OF GOVERNMENT CORNER

East Quarter \_\_\_\_\_ Corner of Section 13, Township 116 N, Range 30 W, 5th P.M.  
STATE OF MINNESOTA, County of McLeod

At the corner location shown on the sketch:

- On June 13, 1991 found a railroad spike at the surface of bituminous shoulder  
DATE 14.5 feet west of the centerline of T.H. 15
- left monument as found,  lowered monument,  removed monument (explain)
- On \_\_\_\_\_ placed a \_\_\_\_\_  
DATE

SKETCH OF REFERENCE TIES



Statement of evidence relative to this corner location is on back of page.

I hereby certify that this document and the data contained herein was prepared by me or under my direct supervision

Robert Gams 8-20-91  
SIGNATURE DATE

Registration No. 11864

Land Surveyor,  Professional Engineer  
 County Surveyor,  County Engineer

OFFICE OF THE COUNTY RECORDER  
County of McLeod

I hereby certify that this document was filed in the Co. Recorders office at 2 P .M. on the 10th day of Sep A.D. 1991

County Recorder Cherren Ostlie  
By \_\_\_\_\_, Deputy

DOCUMENT NO. 241054

Statement of Evidence:

East Quarter Corner Section 13, T 116 N, R 30 W

- 1855 - The original Public Land Survey of the township line was completed by John Ryan. A wood post was set over a deposit of charcoal in a dirt mound to mark the corner. Trenches and pits were dug to build the mound. Osage orange was planted at the corners of the mound.
- 1941 - The Minnesota Highway Department right of way map shows the corner to be 14.8 feet west of T.H. 15 P.O.T. 1149+46.3. It was located at the intersection of the centerline of a north/south road with fence lines to the east and to the west.
- 1942 - All evidence of the corner was probably destroyed when T.H. 15 was graded.
- 1970 +/- Dickman Knutson, McLeod County Surveyor, found a railroad spike 14.8 feet west of the centerline of T.H. 15 and set a McLeod County cast iron monument to replace it.
- 1983 - R. C. Jones, Registered Land Surveyor with Mn/DOT, found the cast iron monument about 3" below the surface of the gravel shoulder of T.H. 15. It was located 14.73 feet west of T.H. 15 P.O.T. 1149+46.04. Reference ties were set and a certificate was filed with the McLeod County Recorder, Document No. 202054.
- 1989 - Willard Pellinen, McLeod County Surveyor, found an indication of iron and set a railroad spike at the surface of the bituminous shoulder of T.H. 15. The bituminous was widened by Mn/DOT sometime between 1983 and 1989 and the top of the cast iron monument may have been destroyed during that reconstruction.
- 1990 - A Mn/DOT survey crew recovered the railroad spike.
- 1991 - R. C. Jones found the railroad spike at the road surface.

The railroad spike is accepted as the corner location because it was found to be 14.50 feet west of T.H. 15 P.O.T. 1149+45.16, which substantially fits earlier locations, and it very nearly fits the reference ties set in 1983.

For additional information, contact the Mn/DOT Surveys Section at Willmar, Mn 56201.

# CERTIFICATE OF LOCATION OF GOVERNMENT CORNER

Northeast Corner of Section 13, Township 116 N, Range 30 W, 5th P.M.

STATE OF MINNESOTA, County of McLeod

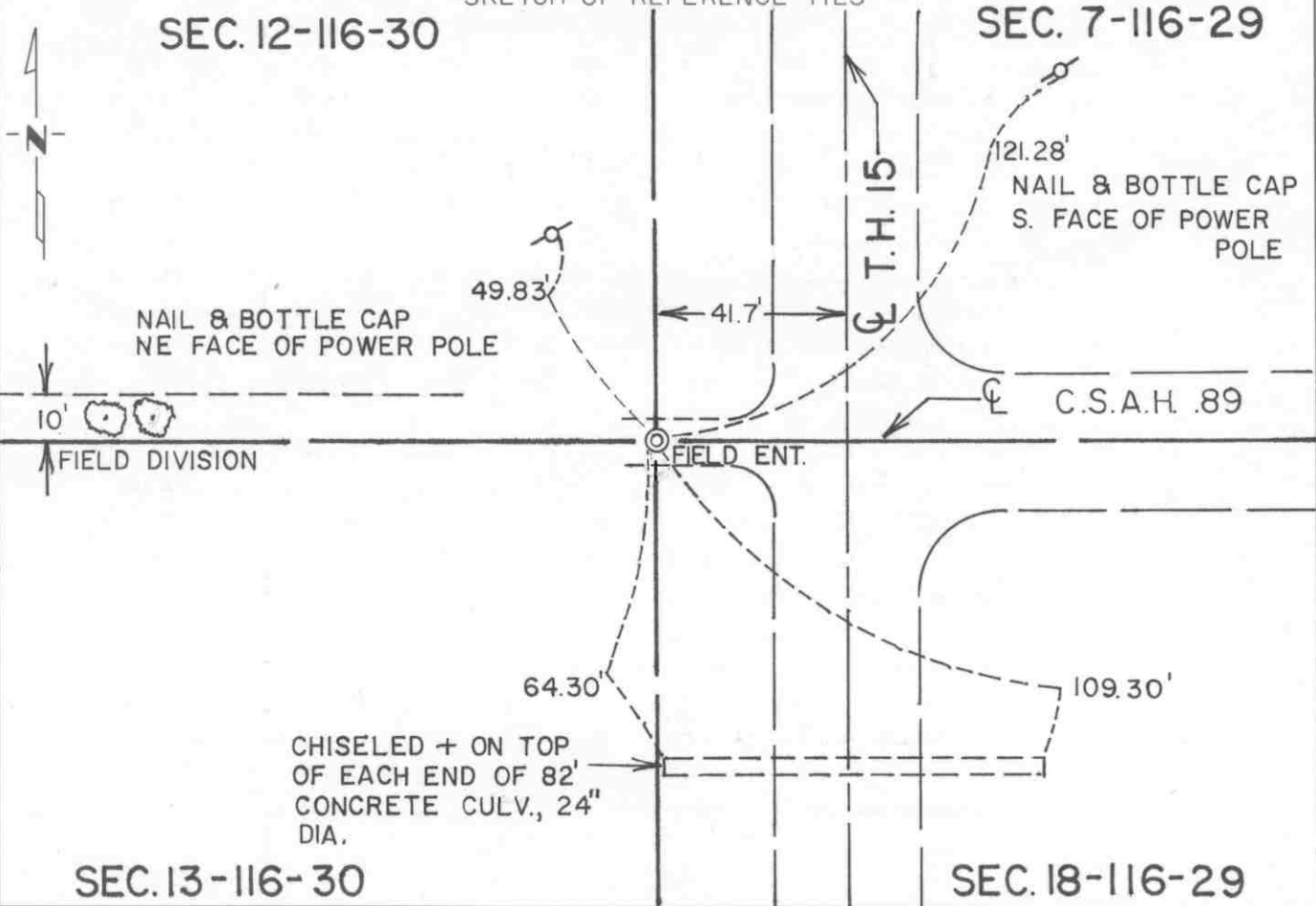
At the corner location shown on the sketch:

On June 13, 1991 found a 1/2" diameter iron pipe at the surface of a  
DATE field entrance 41.72 feet west of centerline T.H. 15

left monument as found,  lowered monument,  removed monument (explain)

On \_\_\_\_\_ placed a \_\_\_\_\_  
DATE

SKETCH OF REFERENCE TIES



Statement of evidence relative to this corner location is on back of page.

I hereby certify that this document and the data contained herein was prepared by me or under my direct supervision

Robert Jones 8-20-91  
SIGNATURE DATE

Registration No. 11864

- Land Surveyor,  Professional Engineer
- County Surveyor,  County Engineer

OFFICE OF THE COUNTY RECORDER

County of McLeod

I hereby certify that this document was filed in the Co. Recorders office at 2 P .M. on the 18th day of sep A.D. 1991

County Recorder Armen Ostlie

By \_\_\_\_\_, Deputy

DOCUMENT NO. 241053

Statement of Evidence:

Northeast Corner Section 13, T 116 N, R 30 W

- 1855 - The original Public Land Survey of the township line was completed by John Ryan. A wood post was set over a deposit of charcoal in a dirt mound to mark the corner. Trenches and pits were dug to build the mound. Osage orange was planted at the corners of the mound.
- 1899 - E. L. Higgins, McLeod County Surveyor, found a stone at the corner.
- 1900 - E. L. Higgins' survey notes show that the stone was buried under 5 feet of earth.
- 1941 - The Minnesota Highway Department right of way map shows the corner to be 41.7 feet west of the T.H. 15 P.O.T. 1176+15.0. It was at the centerline of a north/south road, the centerline of a road east, and in line with a fence line to the west.
- 1965 - Lew Merrill showed the corner to be at the centerline of T.H. 15 when he surveyed the E 1/2 of the SE 1/4 of Section 12.
- 1969 - Dickman Knutson, McLeod County Surveyor, found an iron pipe 41.7 feet west of a spike found at the centerline of T.H. 15. He set reference ties and replaced the iron pipe with a McLeod County cast iron monument.
- 1983 - R. C. Jones, Registered Land Surveyor with Mn/DOT, found the bottom of the cast iron monument. The top had been broken off. It was located 41.60 feet west of T.H. 15 P.O.T. 1176+15.99. A certificate was filed with the McLeod County Recorder, Document No. 202055.
- 1987 - Willard Pellinen, McLeod County Surveyor, found the cast iron monument and set additional reference ties because it was due to be destroyed by road construction.
- 1989 - Willard Pellinen set an iron pipe to mark the corner.
- 1990 - A Mn/DOT survey crew recovered the iron pipe.
- 1991 - R. C. Jones, Registered Land Surveyor with Mn/DOT, found a 1/2" diameter iron pipe at the surface of a field entrance. The iron pipe is accepted as the corner location because it is 41.72 feet west of T.H. 15 P.O.T. 1176+16.73, which substantially fits the locations described in 1941 and 1983. It is in line with the centerline of County Road 18 to the east.

For additional information, contact the Mn/DOT Surveys Section at Willmar, Mn 56201.

# CERTIFICATE OF LOCATION OF GOVERNMENT CORNER

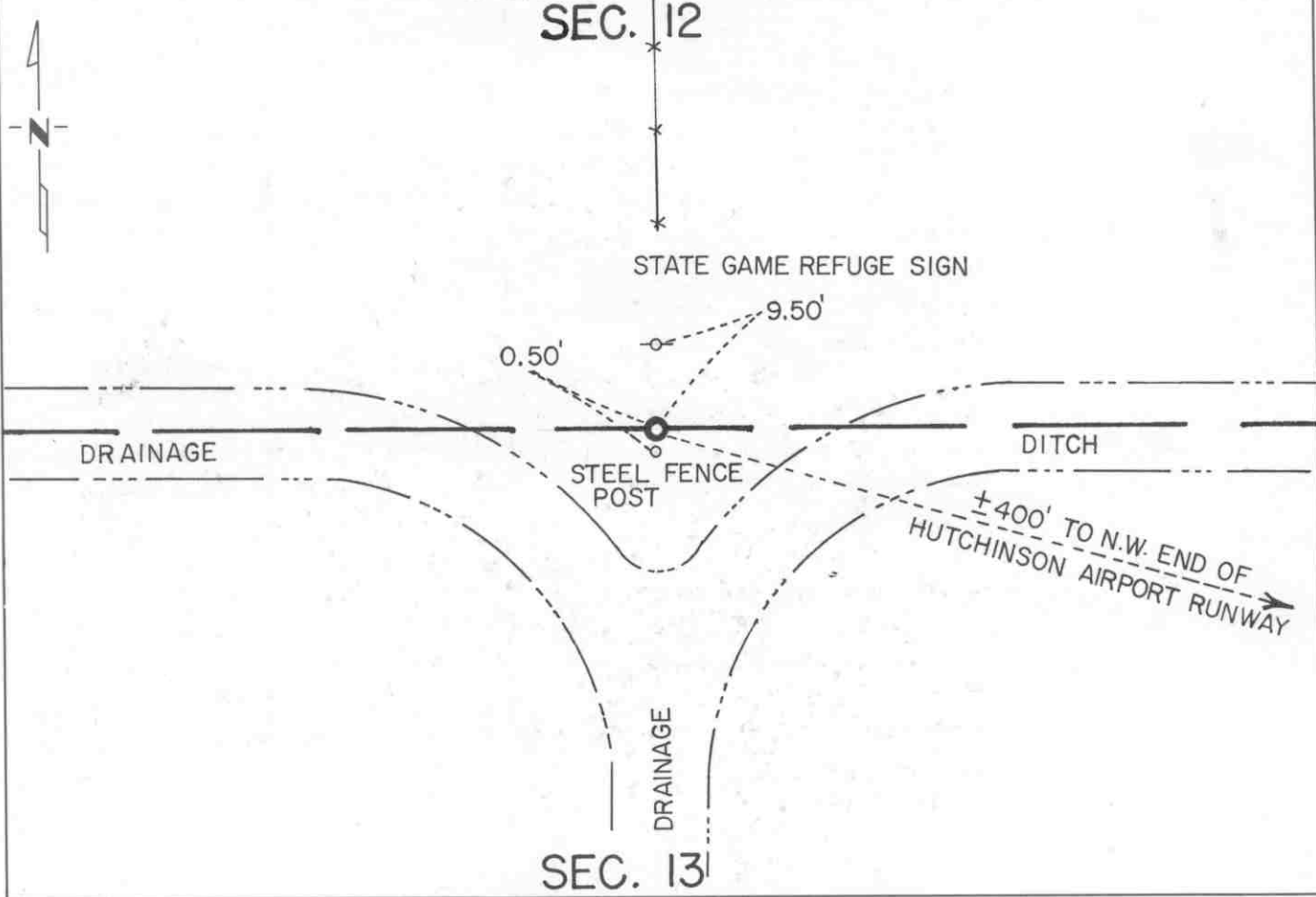
North Quarter Corner of Section 13, Township 116 N, Range 30 W, 5th P.M.

STATE OF MINNESOTA, County of McLeod

At the corner location shown on the sketch:

- On August 6, 1991 found a cast iron monument at the surface of the ground  
DATE
- left monument as found,  lowered monument,  removed monument (explain)
- On \_\_\_\_\_ placed a \_\_\_\_\_  
DATE

SKETCH OF REFERENCE TIES



Statement of evidence relative to this corner location is on back of page.

I hereby certify that this document and the data contained herein was prepared by me or under my direct supervision.

Robert C. Gans 8-26-91  
SIGNATURE DATE

Registration No. 11864

- Land Surveyor,  Professional Engineer
- County Surveyor,  County Engineer

OFFICE OF THE COUNTY RECORDER

County of McLeod

I hereby certify that this document was filed in the Co. Recorders office at 2 P .M. on the 18th day of Sep A.D. 1991

County Recorder Carmen Ostlie

By \_\_\_\_\_, Deputy

DOCUMENT NO. 241055

Statement of Evidence:

North Quarter Corner Section 13, T 116 N, R 30 W

- 1855 - The original Public Land Survey was completed by Thomas Simpson. A wood post was set over a charred stake in a dirt mound to mark the corner. Trenches and pits were dug to build the mound. Osage orange was planted at the northeast and southwest corners of the mound.
- 1971 - Dickman Knutson, McLeod County Surveyor, set a McLeod County cast iron monument at the location of an old wood post, which was found by him in 1968. It was located on the projection the the centerlines of drainage ditches to the east, west, and south. It is on the southerly projection of a fence line to the north.
- 1990 - A Mn/DOT survey crew found the cast iron monument as shown in Knutson's survey notes.

The cast iron monument is accepted as the corner location because it fits long standing occupation lines and it is 3.5 feet west and 6.7 feet north of the lost location.

For additional information, contact the Mn/DOT Surveys Section at Willmar, Mn 56201.

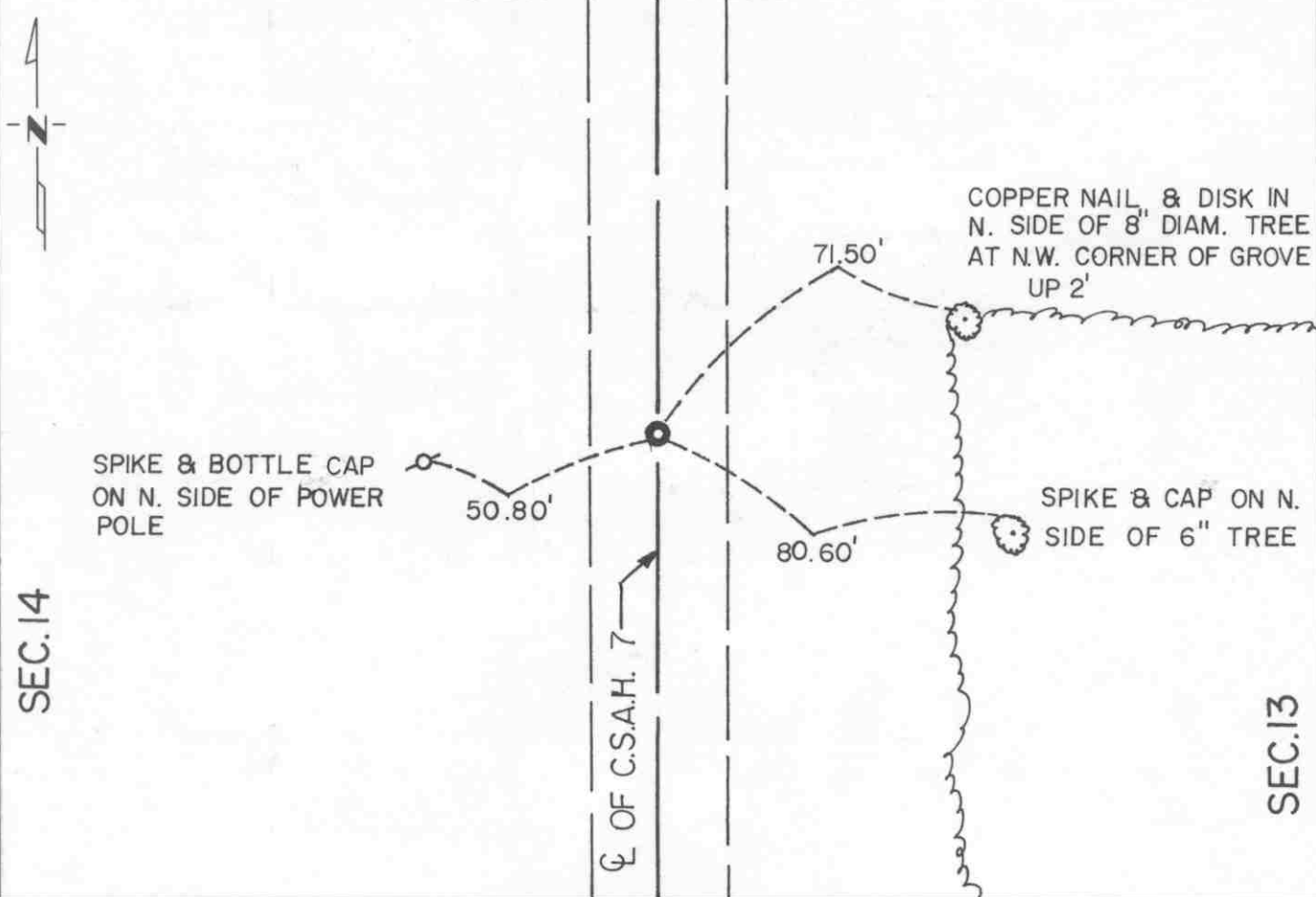
# CERTIFICATE OF LOCATION OF GOVERNMENT CORNER

East Quarter \_\_\_\_\_ Corner of Section 14, Township 116 N, Range 30 W, 5th P.M.  
 STATE OF MINNESOTA, County of McLeod

At the corner location shown on the sketch:

- On Apr. 12, 1990 found a cast iron monument at the road surface  
DATE
- left monument as found,  lowered monument,  removed monument (explain)
- On \_\_\_\_\_ placed a \_\_\_\_\_  
DATE

SKETCH OF REFERENCE TIES



Statement of evidence relative to this corner location is on back of page.

I hereby certify that this document and the data contained herein was prepared by me or under my direct supervision.

Robert Jones 8-20-91  
SIGNATURE DATE

Registration No. 11864  
 Land Surveyor,  Professional Engineer  
 County Surveyor,  County Engineer

OFFICE OF THE COUNTY RECORDER

County of McLeod

I hereby certify that this document was filed in the Co. Recorders office at 2 P.M. on the 18th day of Sep A.D., 1991

County Recorder Carmen Ostlie

By \_\_\_\_\_, Deputy

DOCUMENT NO. 241057



Statement of Evidence:

East Quarter Corner Section 14, T 116 N, R 30 W

- 1855 - The original Public Land Survey was completed by Thomas Simpson. A wood post was set over a charred stake in a dirt mound to mark the corner. Trenches and pits were dug to build the mound. Osage orange was planted at the northeast and southwest corners of the mound.
- 1974 - Dickman Knutson, McLeod County Surveyor, dug for the corner. A hole 10 feet by 5 feet by 5 feet deep was excavated but nothing was found. Two local residents were interviewed. Louis Reckow, age 54 and a resident of the SE 1/4 of the section all his life, said the fence line to the west is on the quarter line. Albert Kramer, age 71 and a resident of the NE 1/4 of the section for the past 10 years, also thought the fence line to the west was the quarter line.
- 1979 - Willard Pellinen, McLeod County Surveyor, set a nail and disc in the centerline of a north/south road and in line with a fence to the west. All according to the testimony of the local residents. This location very nearly fit the proration of distances measured by the McLeod County Highway Department. Reference ties were set.
- 1980 - Willard Pellinen replaced the nail and disc with a McLeod County cast iron monument.
- 1990 - R. C. Jones, Registered Land Surveyor with Mn/DOT, found the cast iron monument at the road surface and set new reference ties.

The cast iron monument is accepted as the corner location because it fit long standing occupation lines and it nearly fit the county highway department survey distances.

For additional information, contact the Mn/DOT Surveys Section at Willmar, Mn 56201.

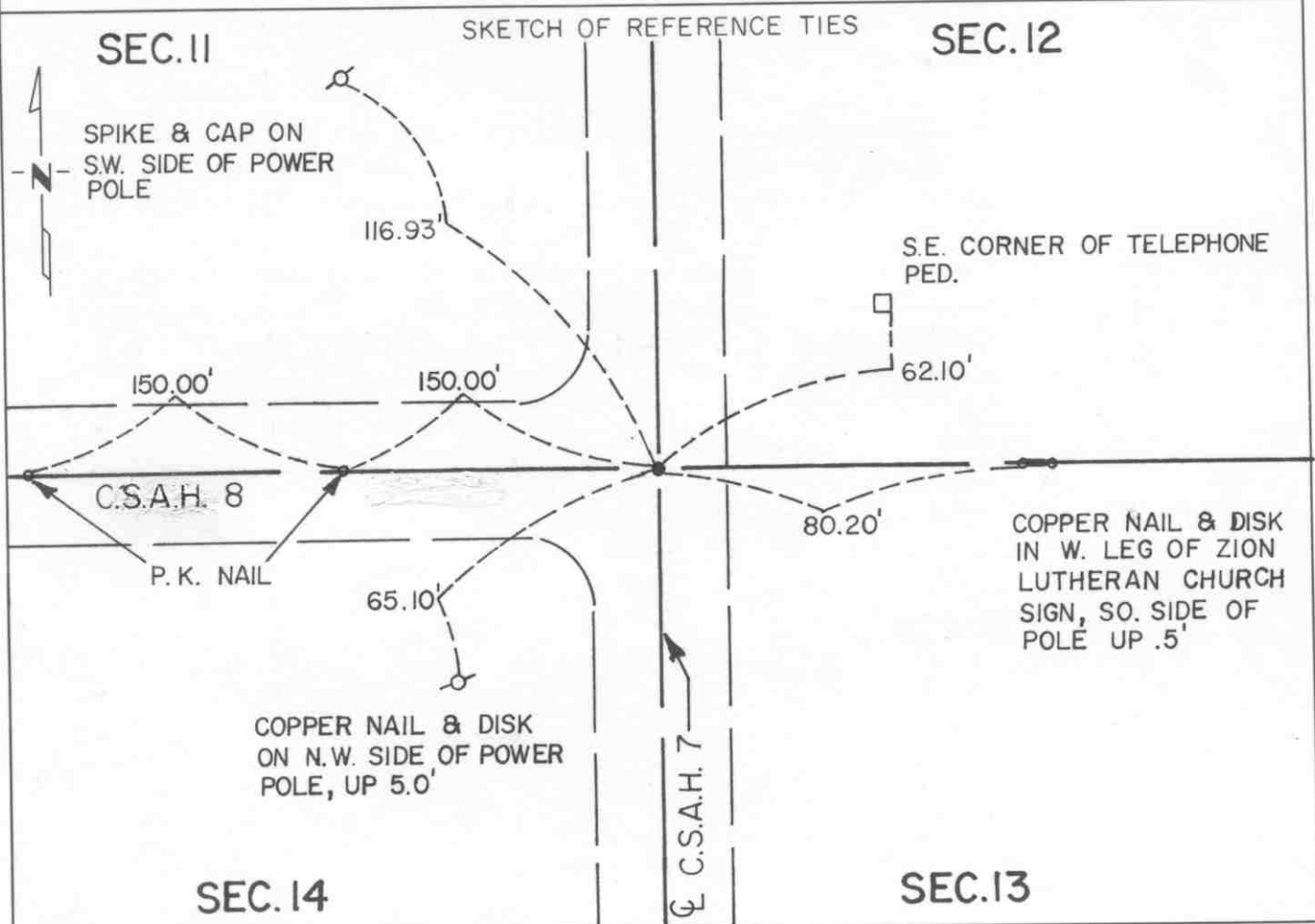
# CERTIFICATE OF LOCATION OF GOVERNMENT CORNER

Northeast Corner of Section 14, Township 116 N, Range 30 W, 5th P.M.

STATE OF MINNESOTA, County of McLeod

At the corner location shown on the sketch:

- On Apr. 12, 1990 found a cast iron monument near the road surface  
DATE
- left monument as found,  lowered monument,  removed monument (explain)
- On \_\_\_\_\_ placed a \_\_\_\_\_  
DATE



Statement of evidence relative to this corner location is on back of page.

I hereby certify that this document and the data contained herein was prepared by me or under my direct supervision.

Robert J. Gaus 8-20-91  
SIGNATURE DATE

Registration No. 11864

- Land Surveyor,  Professional Engineer
- County Surveyor,  County Engineer

OFFICE OF THE COUNTY RECORDER

County of McLeod

I hereby certify that this document was filed in the Co. Recorders office at 2 P .M. on the 18th day of Sep A.D. 1991

County Recorder Carmen Ostlie

By \_\_\_\_\_, Deputy

DOCUMENT NO. 241056

Statement of Evidence:

Northeast Corner Section 14, T 116 N, R 30 W

- 1855 - The original Public Land Survey was completed by Thomas Simpson. A wood post was set over a charred stake in a dirt mound to mark the corner. Trenches and pits were dug to build the mound. Osage orange was planted at the corners of the mound.
- 1971 - Dickman Knutson, McLeod County Surveyor, found an iron pipe that has been used as the corner by previous surveyors for many years. He set reference ties and dug below the pipe. A spike and a spike and bottle cap were found directly below the pipe and about 1 1/2 feet below the road surface. The iron pipe was replaced with a McLeod County cast iron monument, which was set directly over the spikes. It was located at the centerlines of roads north, south, and west.
- 1990 - R. C. Jones, Registered Land Surveyor with Mn/DOT, found the cast iron monument near the road surface. New reference ties were set because three of the four set in 1971 had been destroyed.

The cast iron monument is accepted as the corner location because previous surveys are dependent on this location and it fits long standing occupation lines; that is, the centerlines of roads north, south, and west.

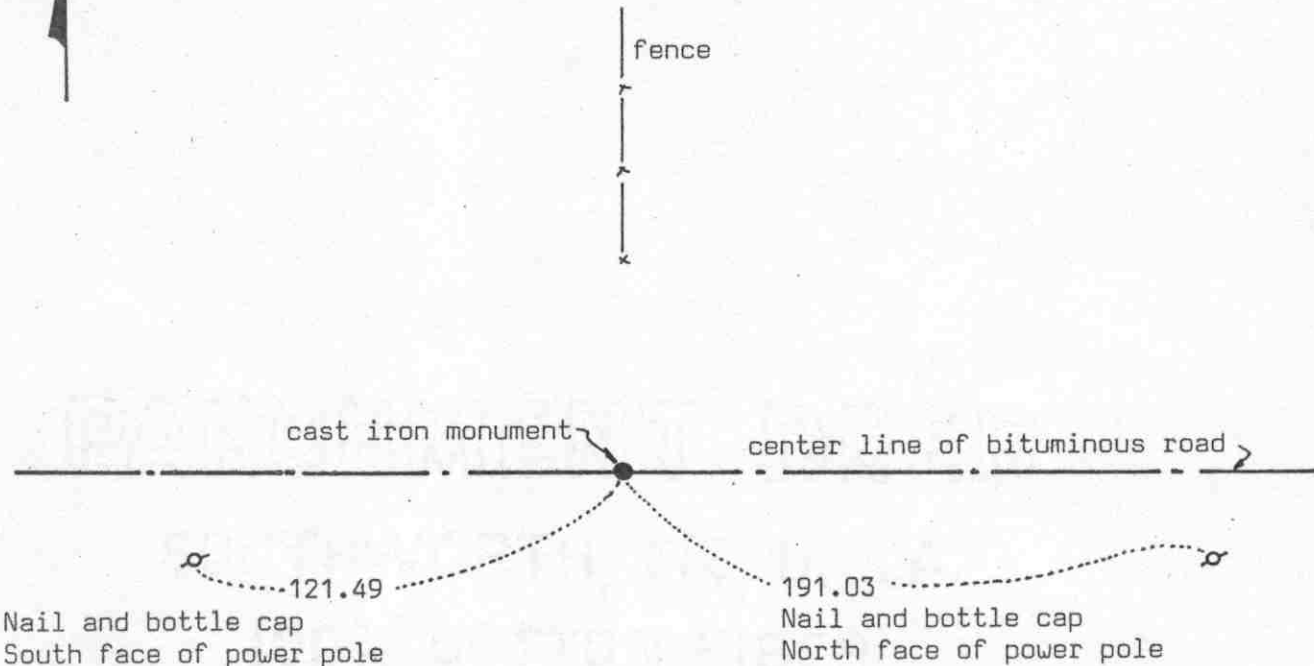
For additional information, contact the Mn/DOT Surveys Section at Willmar, Mn 56201.

### Certificate of Location of Government Corner



#### SKETCH OF REFERENCE TIES

(NO SCALE)



Statement of evidence relative to this corner location on sheet 2

I hereby certify that this document was prepared by me or under my direct supervision.

Willard Pellinen  
Willard Pellinen  
McLeod County Surveyor  
License No. 9626

Date 8/7/89

OFFICE OF THE COUNTY RECORDER  
MCLEOD COUNTY, MINNESOTA:

I hereby certify that this document was filed in this office at 9 o'clock A.M. on the 15th day of Aug., 19 89.

Carmen Dottie, County Recorder  
By \_\_\_\_\_, Deputy

Document No. 229484

## Certificate of Location of Government Corner

This corner was originally set in 1855 by the General Land Office. Thomas Simpson "set quarter section post in mound with trench, pits, charred stake and osage orange seeds northeast and southwest."

Lew Merrill, former county surveyor, said there was a stone at the quarter corner in the 1930's.

November 1968. McCombs Knutson Associates (Dickman Knutson, county surveyor) measured the north line of Section 14 and set a temporary corner, an iron pipe, half way between section corners. This was in line with a fence running north and about  $5\frac{1}{2}$  feet south of a straight line between the section corners.

September, 1971. McCombs Knutson Associates set a cast iron monument in place of the iron pipe.

July, 1974. Knutson dug for the corner below the cast iron monument. They found a wood hub down about 1 foot below the road surface and a stone below the hub. They took reference ties and reset the cast iron monument. This fell about 0.1 foot east and 0.5 foot south of the original location of the monument.

February 27, 1989. We found the cast iron monument in good condition and checked the reference ties.

We accept this as the correct location of the quarter corner because it fits long standing occupation lines and we feel the stone has perpetuated the location of the original corner.

# Certificate of Location of Government Corner

SKETCH OF REFERENCE TIES

(NO SCALE)



SECTION 15

SECTION 14

Nail and bottle cap  
South face of 30 inch cottonwood  
Up 3 feet

fence

32.12

fence

Nail and bottle cap  
E'ly face of 60 inch  
cottonwood, up 3 feet  
40.32

cast iron monument

30.80

12.45

Nail and bottle cap  
East face of 6 inch box elder  
Up 2 feet

Nail and bottle cap  
SE face of 40 inch cottonwood  
Up 4 feet

fence

Statement of evidence relative to this corner location on sheet 2

I hereby certify that this document was prepared by me or under my direct supervision.

Willard Pellinen

Willard Pellinen  
McLeod County Surveyor  
License No. 9626

Date February 5, 1991

OFFICE OF THE COUNTY RECORDER  
MCLEOD COUNTY, MINNESOTA.

I hereby certify that this document was filed in this office at 9 o'clock A.M. on the 7th day of Feb, 1991.

Carmen Ostlie, County Recorder

By \_\_\_\_\_, Deputy

Document No. 237438

## Certificate of Location of Government Corner

This corner was originally set by the government in August, 1855. Thomas Simpson set a post in a mound with trench, pits, charred stake and he planted osage orange seeds at the northeast and southwest corners of the mound.

December 5, 1973. McCombs Knutson Associates (Dickman Knutson, county surveyor) set a McLeod County cast iron monument at a fence intersection as per testimony by Anchor Nelsen, congressman, who owns the Northwest Quarter of Section 14. Fences north, south and west.

May 5, 1987. We found the cast iron monument in good condition and measured the east line of Section 15. The quarter corner falls about 4 feet north of a split between the section corners and  $4\frac{1}{2}$  feet west of a straight line between the section corners.

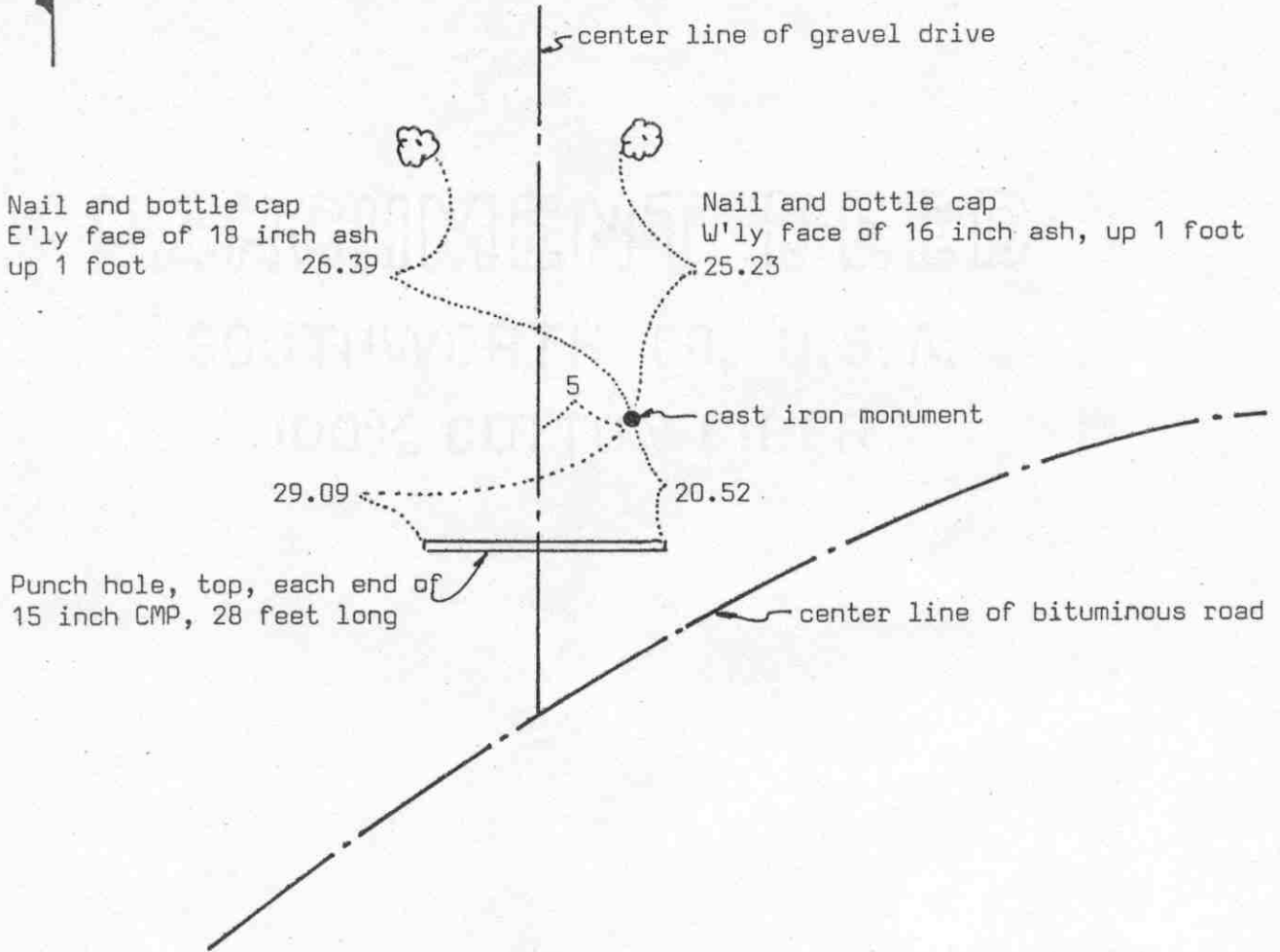
February 22, 1990. We found no reference ties remaining to the corner. The monument was in good condition and we took new ties.

We accept the fence intersection as having perpetuated the correct location of the quarter corner.

# Certificate of Location of Government Corner



SKETCH OF REFERENCE TIES  
(NO SCALE)



Statement of evidence relative to this corner location on sheet 2

I hereby certify that this document was prepared by me or under my direct supervision.

Willard Pellinen  
Willard Pellinen  
McLeod County Surveyor  
License No. 9626

Date 8/6/89

OFFICE OF THE COUNTY RECORDER  
MCLEOD COUNTY, MINNESOTA.

I hereby certify that this document was filed in this office at 9 o'clock A..M. on the 15th day of Aug., 1989.

Carmen Dotlie, County Recorder

By \_\_\_\_\_, Deputy

Document No. 229485



NORTHEAST corner, Section 15, Township 116 North, Range 30 West

## Certificate of Location of Government Corner

This corner was originally set in 1855 by the General Land Office. Thomas Simpson "set post, corner to sections 10,11, 14 and 15. Erected mound with trench, pits, charred stake and osage orange at each angle.

Lew Merrill, former county surveyor, says there is an iron pipe at the corner, deep, in line with county highway to east, near driveway going north.

November, 1968. McCombs Knutson Associates (Dickman Knutson, county surveyor) found a 1 inch diameter iron pipe down  $1\frac{1}{2}$  feet below the surface. They tied it off and set a  $\frac{1}{2}$  inch iron pipe over it.

June, 1968. Knutson set a McLeod County cast iron monument in place of the iron pipe.

February 27, 1989. We found the cast iron monument in good condition down 6 inches below the surface. We took new reference ties.

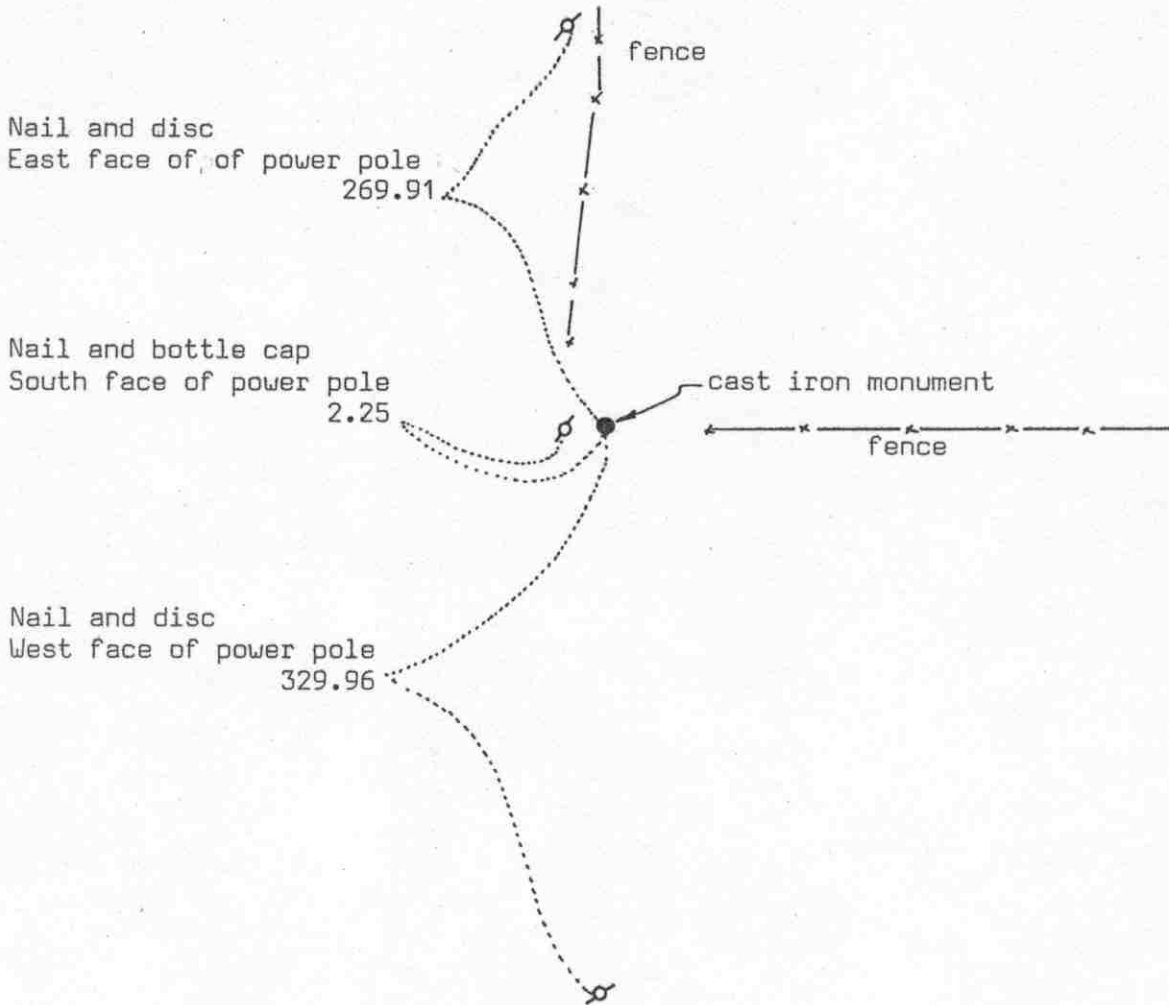
We accept the iron pipe found by Knutson as having perpetuated the true section corner.

### Certificate of Location of Government Corner



SKETCH OF REFERENCE TIES

(NO SCALE)



Statement of evidence relative to this corner location on sheet 2

I hereby certify that this document was prepared by me or under my direct supervision.

Willard Pellinen

Willard Pellinen  
McLeod County Surveyor  
License No. 9626

Date 8/12/89

OFFICE OF THE COUNTY RECORDER  
MCLEOD COUNTY, MINNESOTA.

I hereby certify that this document was filed in this office at 9 o'clock A.M. on the 15th day of Aug., 19 89.

Carmen Ostlie, County Recorder

By \_\_\_\_\_, Deputy

Document No. 229486

NORTH QUARTER corner, Section 15, Township 116 North, Range 30 West

## Certificate of Location of Government Corner

This corner was originally set by the General Land Office in 1855. Thomas Simpson "set quarter section post in mound, with trench and pits, charred stake and osage orange seeds northeast and southwest.

Old survey notes show an oak stake at the corner.

Lew Merrill, former county surveyor said he set an iron pipe at the corner at an old stake at the fence intersection.

December, 1967. McCombs Knutson Associates (Dickman Knutson, county surveyor) found an iron pipe at the fence intersection.

April 19, 1974. Knutson set a McLeod County cast iron monument in place of the iron pipe and took reference ties.

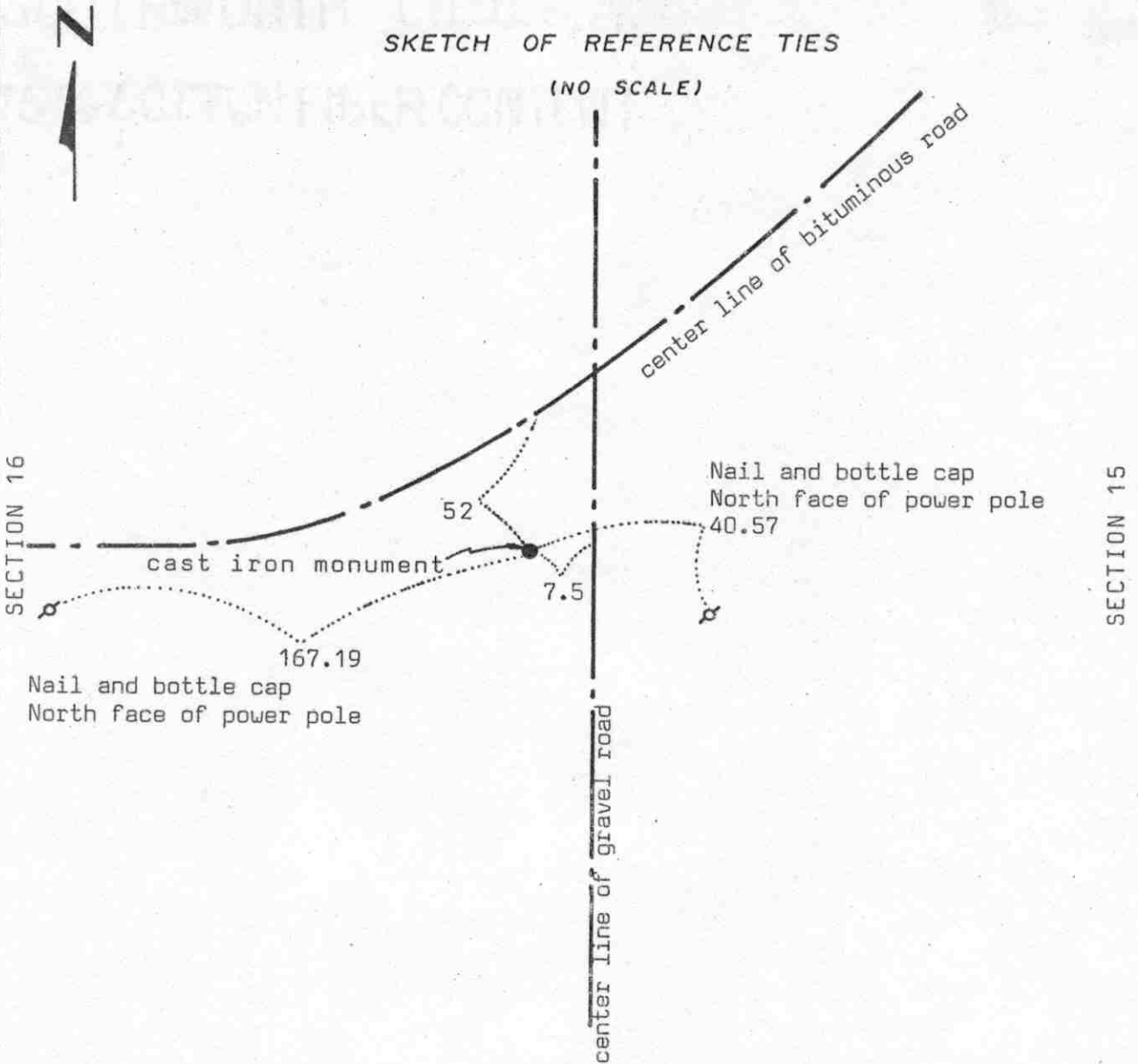
February 27, 1989. We found the cast iron monument in good condition and the reference ties good.

We accept the iron pipe found by Knutson as having perpetuated the correct location of the quarter corner.

### Certificate of Location of Government Corner

#### SKETCH OF REFERENCE TIES

(NO SCALE)



Statement of evidence relative to this corner location on sheet 2

I hereby certify that this document was prepared by me or under my direct supervision.

Willard Pellinen  
Willard Pellinen  
McLeod County Surveyor  
License No. 9626

Date 3/13/90

OFFICE OF THE COUNTY RECORDER  
MCLEOD COUNTY, MINNESOTA.

I hereby certify that this document was filed in this office at 4 o'clock P.M. on the 19th day of March, 1990.

Carmen Ostlie, County Recorder

By \_\_\_\_\_, Deputy

Document No. 232387

## Certificate of Location of Government Corner

This corner was originally set by Thomas Simpson of the General Land Office in 1855. He "set quarter section post in mound with trench, pits, charred stake and osage orange seeds northeast and southwest."

May 17, 1976. Mr. Anton Schmidt, who has lived in the Southwest Quarter of Section 15 all his life, said the quarter corner is on the west side of the road, as is the southeast corner of Section 16.

October 29, 1976. Found a steel fence post down 2 feet below the road surface,  $7\frac{1}{2}$  feet west of the center line of the gravel road. This is about 10 feet south of being half way between the section corners.

August 30, 1978. We set a McLeod County cast iron monument and took reference ties.

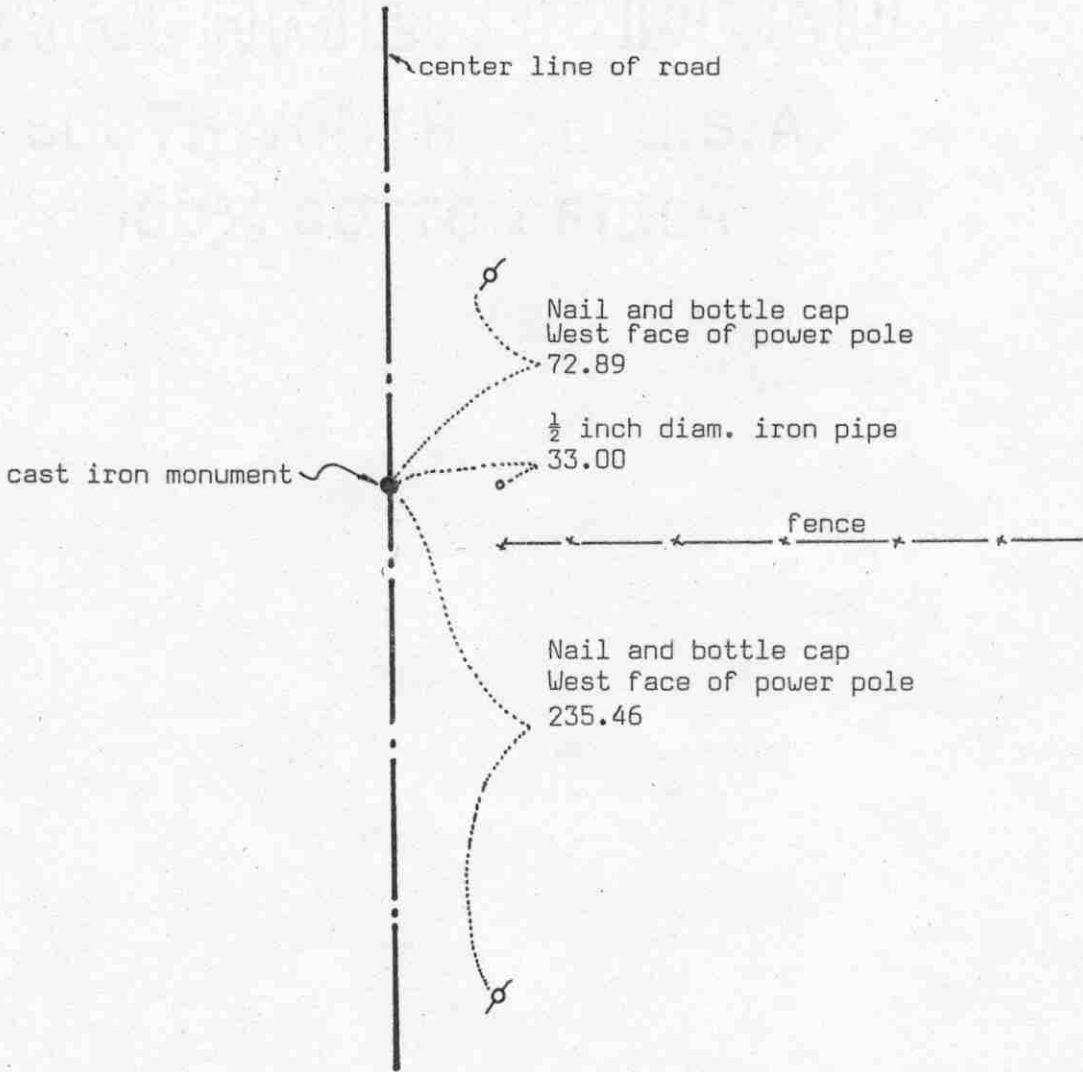
March 8, 1989. We found the cast iron monument in good condition and the reference ties ok.

We accept the found steel post as having perpetuated the correct location of the quarter corner.

# Certificate of Location of Government Corner



SKETCH OF REFERENCE TIES  
(NO SCALE)



Statement of evidence relative to this corner location on sheet 2

I hereby certify that this document was prepared by me or under my direct supervision.

Willard Pellinen

Willard Pellinen  
McLeod County Surveyor  
License No. 9626

Date 8/12/89

OFFICE OF THE COUNTY RECORDER  
MCLEOD COUNTY, MINNESOTA.

I hereby certify that this document was filed in this office at 9 o'clock A.M. on the 15th day of Aug, 1989.

Carmen Dottie, County Recorder

By \_\_\_\_\_, Deputy

Document No. 229487

NORTHEAST \_\_\_\_\_ corner, Section 16, Township 116 North, Range 30 West

## Certificate of Location of Government Corner

This corner was originally set by the General Land Office in 1855. Thomas Simpson "set post, corner to sections 9, 10, 15 and 16. Erected mound with trench and pits, charred stake and osage orange seeds at each angle.

March 22, 1929. E.L.Higgins, surveyor, found a stone at the corner.

1967. McCombs Knutson Associates (Dickman Knutson, county surveyor) found a 2 inch diameter iron pin at the corner down 1 foot below the road surface, and a stone below the iron. They set a cast iron monument and took reference ties.

July 10, 1987. We found that the monument and all the reference ties had been destroyed due to road construction. We reset a cast iron monument using information from a 1984 survey we had done in Section 15. We took new reference ties.

February 27, 1989. We found the monument in good condition and the reference ties good.

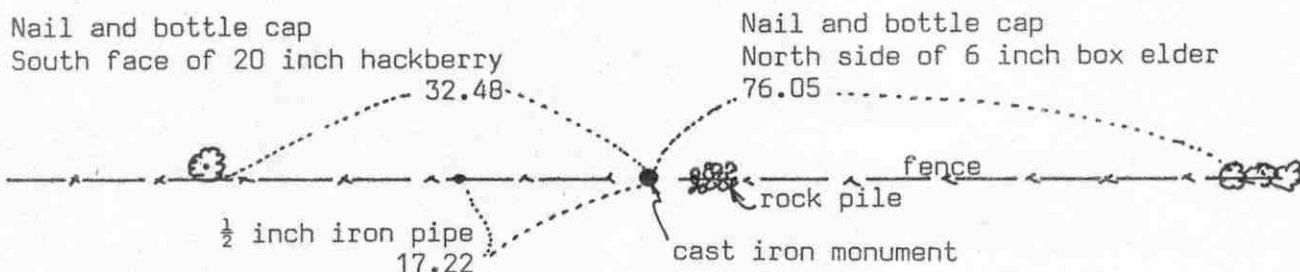
We believe the stone found by Knutson was the same stone found by Higgins in 1929 and that it had perpetuated the true section corner.

# Certificate of Location of Government Corner



## SKETCH OF REFERENCE TIES

(NO SCALE)



Statement of evidence relative to this corner location on sheet 2

I hereby certify that this document was prepared by me or under my direct supervision.

Willard Pellinen

Willard Pellinen  
McLeod County Surveyor  
License No. 9626

Date 8/13/89

OFFICE OF THE COUNTY RECORDER  
MCLEOD COUNTY, MINNESOTA.

I hereby certify that this document was filed in this office at 9 o'clock A.M. on the 15th day of Aug. 1989.

Carmen Cottler, County Recorder

By \_\_\_\_\_, Deputy

Document No. 229488



NORTH QUARTER            corner, Section 16, Township 116 North, Range 30 West

## Certificate of Location of Government Corner

This corner was originally set by the General Land Office in 1855. Thomas Simpson "set quarter section corner in mound with trench and pits, charred stake and osage orange seeds northeast and southwest."

March 22, 1930. Survey notes by E.L.Higgins show the corner to be half way between the section corners. Notes don't show what if anything was found or set at the quarter corner.

April 9, 1980. We measured the north line of Section 16 and set a temporary quarter corner, iron pipe, 17.22 feet west of the midpoint between the section corners.

June 21, 1982. We searched the area for the quarter corner and found an old fence post lying down at the corner location. We set a McLeod County cast iron monument half way between the section corners. This fell at the base of the old fence post. Our distances to the section corners is within 0.4 foot of 1930 distances by Higgins. We set the monument along the old fence line which is approximately 1 foot south of a straight line between the section corners.

February 28, 1989. We found the monument in good condition and the reference ties good.

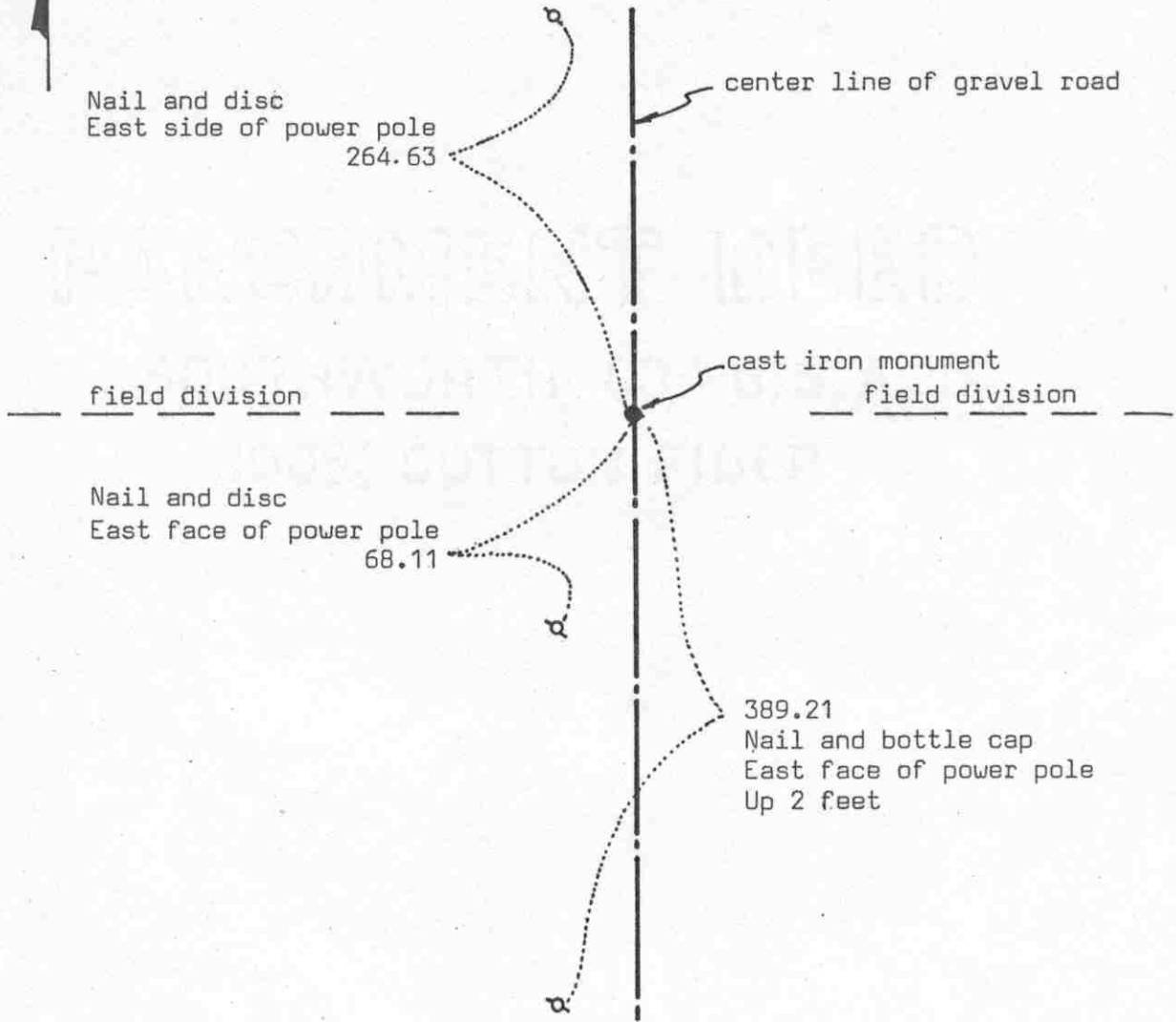
We believe the old fence running east and west and the 1930 distances by Higgins have perpetuated the correct location of the quarter corner.

# Certificate of Location of Government Corner



## SKETCH OF REFERENCE TIES

(NO SCALE)



Statement of evidence relative to this corner location on sheet 2

I hereby certify that this document was prepared by me or under my direct supervision.

Willard Pellinen

Willard Pellinen  
McLeod County Surveyor  
License No. 9626

Date 8/13/89

OFFICE OF THE COUNTY RECORDER  
MCLEOD COUNTY, MINNESOTA.

I hereby certify that this document was filed in this office at 9 o'clock A.M. on the 15th day of Aug, 1989.

Carmen Potlie, County Recorder

By \_\_\_\_\_, Deputy

Document No. 229490

EAST QUARTER corner, Section 17, Township 116 North, Range 30 West

## Certificate of Location of Government Corner

This corner was originally set in 1855 by Thomas Simpson of the General Land Office. He "set quarter section post in mound with trench, pits, charred stake and osage orange seeds northeast and southwest."

January 15, 1979. Ralph Rauch, 55 years old, in Northeast Quarter of Section 17 for 32 years, said fence along south line of Northeast Quarter and center line of road should be on quarter line and along section line. John Duesterhoeft, 6 years old, in the Southeast Quarter of Section 17 all his life, agrees with Mr. Rauch.

August 30, 1979. We dug for the corner, John Tupa from Hutchinson with a backhoe. Down  $2\frac{1}{2}$  feet below the road surface we found a 6 inch diameter stone with a rotted wood stake below it. We took a photo and tied off.

March 7, 1980. We set a spike at the corner using the 1979 ties.

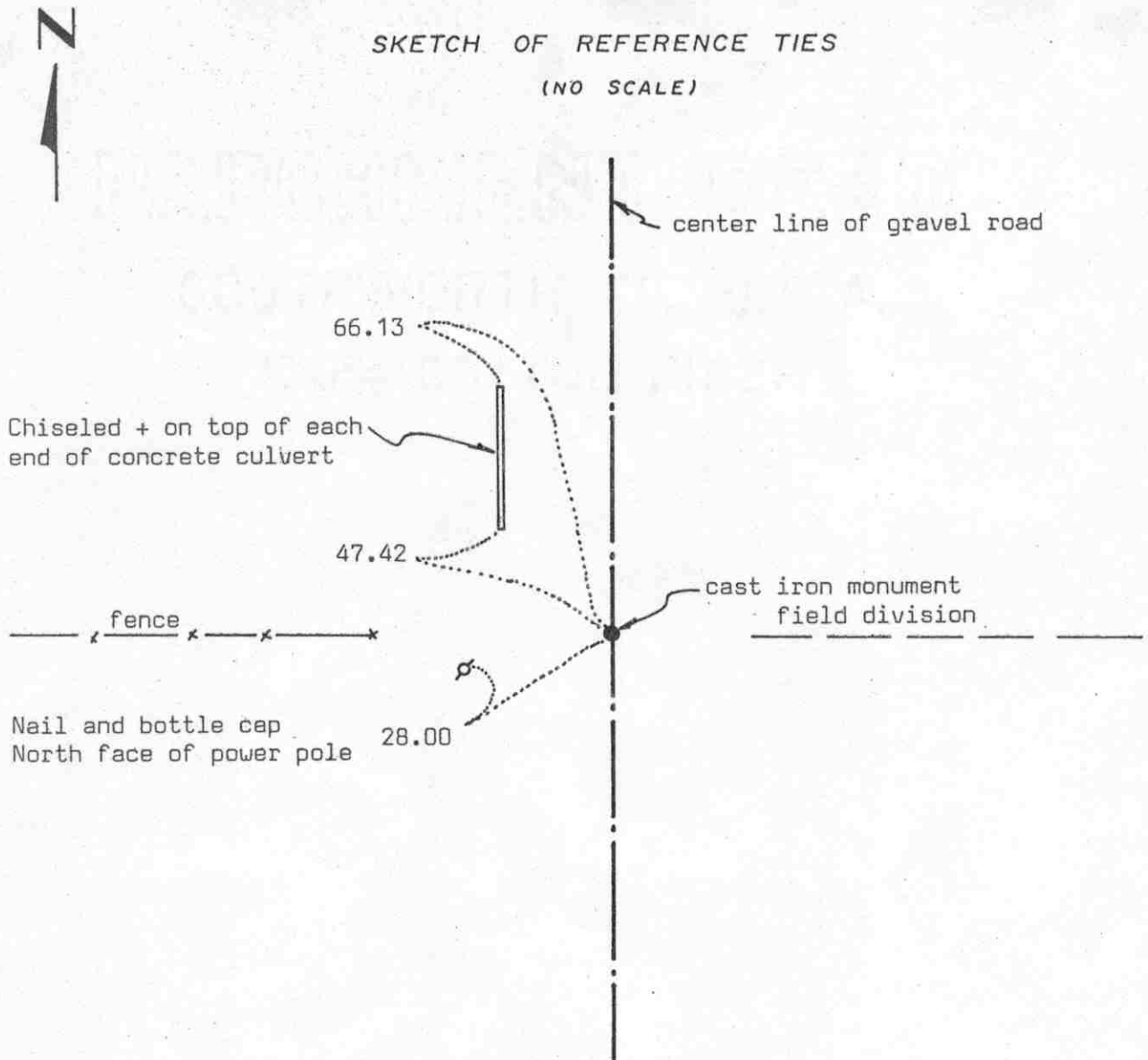
June 18, 1982. We replaced the spike with a McLeod County cast iron monument.

February 28, 1989. We found the monument in good condition and the reference ties good.

We accept the found stone and stake as having perpetuated the correct location of quarter corner. It fits long standing occupation lines and the adjoining land owners agree it is the correct location.

# Certificate of Location of Government Corner

SKETCH OF REFERENCE TIES  
(NO SCALE)



Statement of evidence relative to this corner location on sheet 2

I hereby certify that this document was prepared by me or under my direct supervision.

Willard Pellinen

Willard Pellinen  
McLeod County Surveyor  
License No. 9626

Date 8/13/89

OFFICE OF THE COUNTY RECORDER  
MCLEOD COUNTY, MINNESOTA.

I hereby certify that this document was filed in this office at 9 o'clock A.M. on the 15th day of Aug., 1989.

Carmen Potlie, County Recorder

By \_\_\_\_\_, Deputy

Document No. 229489

NORTHEAST corner, Section 17, Township 116 North, Range 30 West

## Certificate of Location of Government Corner

This corner was originally set by the General Land Office in 1855. Thomas Simpson "set post, corner to sections 8, 9, 16 and 17, erected mound with trench and pits, charred stake and osage orange seeds at each angle.

March 22, 1930. E.L.Higgins, surveyor, found a stone and iron at corner.

January 6, 1979. Roland Tauer, 62 years old, lived in the Southeast Quarter of Section 8 for 22 years, said the center line of the road and fence to west should be correct location. Has been accepted by all adjoining land owners as corner.

August 30, 1979. We dug for the corner, John Tupa from Hutchinson with a backhoe. Down 2 feet below the road surface we found stone, old plow share and a wood post. We took a photo and reference ties.

March 7, 1980. We set a spike at the corner and took additional reference ties.

July 8, 1980. We set a McLeod County cast iron monument.

February 28, 1989. We found the cast iron monument in good condition and the reference ties good.

We believe the stone and plow share are the same stone and iron found by Higgins in 1930 and that they have perpetuated the correct location of the section corner.

# Certificate of Location of Government Corner



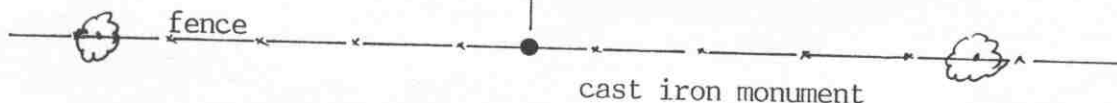
SKETCH OF REFERENCE TIES  
(NO SCALE)

SECTION 8

Nail and disc  
West face of 5 inch tree  
89.12



Nail and disc  
S'ly face of 3 inch tree  
5.35



389.22  
Nail and disc  
South face of 22 inch tree

333.73  
Nail and disc  
South face of 12 inch tree

SECTION 17

Statement of evidence relative to this corner location on sheet 2

I hereby certify that this document was prepared by me or under my direct supervision.

Willard Pellinen  
Willard Pellinen  
McLeod County Surveyor  
License No. 9626

Date Feb. 5, 1991

OFFICE OF THE COUNTY RECORDER  
MCLEOD COUNTY, MINNESOTA.

I hereby certify that this document was filed in this office at 9 o'clock A.M. on the 7th day of Feb, 1991.

Carmen Ostlie, County Recorder  
By \_\_\_\_\_, Deputy

Document No. 237439

## Certificate of Location of Government Corner

This corner was established by the government in August, 1855. Thomas Simpson set a post in a mound with trench, pits, charred stake and he planted osage orange seeds at the northeast and southwest corners of the mound.

June 13, 1930. Field notes of E.L.Higgins, in a survey in Section 8, shows a fence running north from the north quarter corner of Section 17.

January 5, 1979. We measured the north line of Section 17 and set a temporary quarter corner at a fence intersection, fences north, east and west. Mr. Roland Tauer, in Southeast Quarter of Section 8 says there is an old rotted fence corner post, under some stones, at the corner. Mr. Ralph Rauch, 55 years old, who has lived in the Northeast Quarter of Section 17 for 32 years agrees.

January 8, 1979. Mr. Larry Fraser, who farms in the Southwest Quarter of Section 8 said the fence intersection is the quarter corner. Mr. Kenneth Kiecker, 59 years old, who has lived in the Northwest Quarter of Section 17 for 31 years agrees with Mr. Fraser.

June 28, 1979. We found the rotted wood corner post and set a McLeod County cast iron monument in its place and took reference ties.

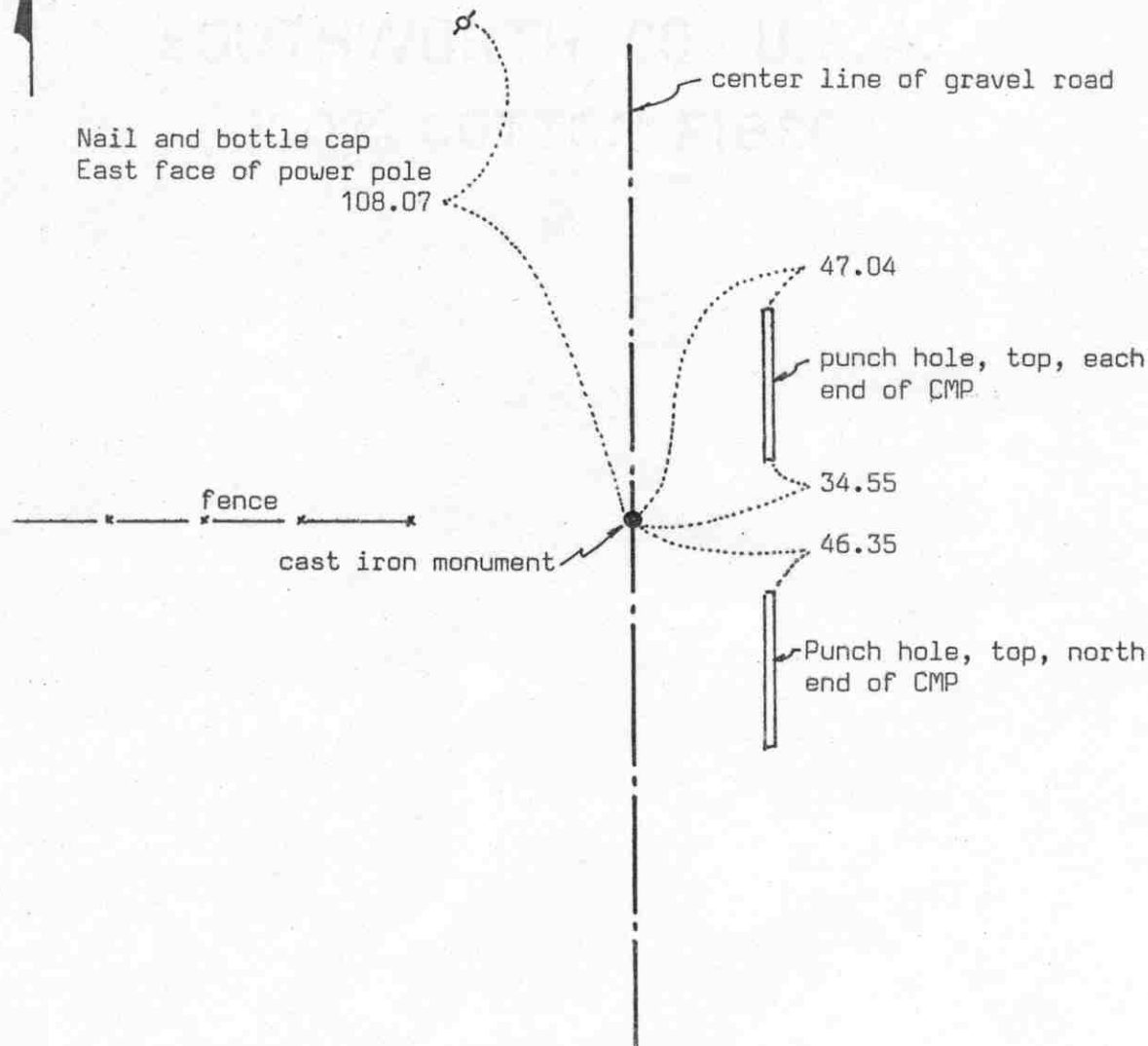
February 22, 1990. We found the monument in good condition and checked the reference ties.

We accept the old corner fence post as having perpetuated the correct location of the quarter corner.

# Certificate of Location of Government Corner



SKETCH OF REFERENCE TIES  
(NO SCALE)



Statement of evidence relative to this corner location on sheet 2

I hereby certify that this document was prepared by me or under my direct supervision.

Willard Pellinen

Willard Pellinen  
McLeod County Surveyor  
License No. 9626

Date 1/6/90

OFFICE OF THE COUNTY RECORDER  
MCLEOD COUNTY, MINNESOTA.

I hereby certify that this document was filed in this office at 2 o'clock P.M. on the 8th day of February, 1990.

Carmen Potlie, County Recorder

By \_\_\_\_\_, Deputy

Document No. 231866



EAST QUARTER corner, Section 18, Township 116 North, Range 30 West

## Certificate of Location of Government Corner

This corner was originally set in 1855 by Thomas Simpson of the General Land Office. He "set quarter section corner in mound with trench, pits, charred stake and osage orange at northeast and southwest."

January 8, 1978. Mr. L. Plath, 70 years old, lived in Southwest Quarter of Section 17 since 1938, said "marker" was found in center of road in line with fence to the west when the road was rebuilt in the 1960's. Mr. Kenneth Kiecker, 59 years old, in the Northwest Quarter of Section 17 for 31 years said the same as Mr. Plath.

August 29, 1979. We dug for the corner, John Tupa from Hutchinson, with a backhoe. Down at 6 inches below the surface we found a railroad spike. Down at  $1\frac{1}{2}$  feet we found an 8 inch diameter stone. At 3 feet down we found a 10 inch diameter stone and at  $4\frac{1}{2}$  feet down we found a 16 inch diameter stone. All the stones directly below the railroad spike.

August 30, 1979. We set a McLeod County cast iron monument and took available reference ties.

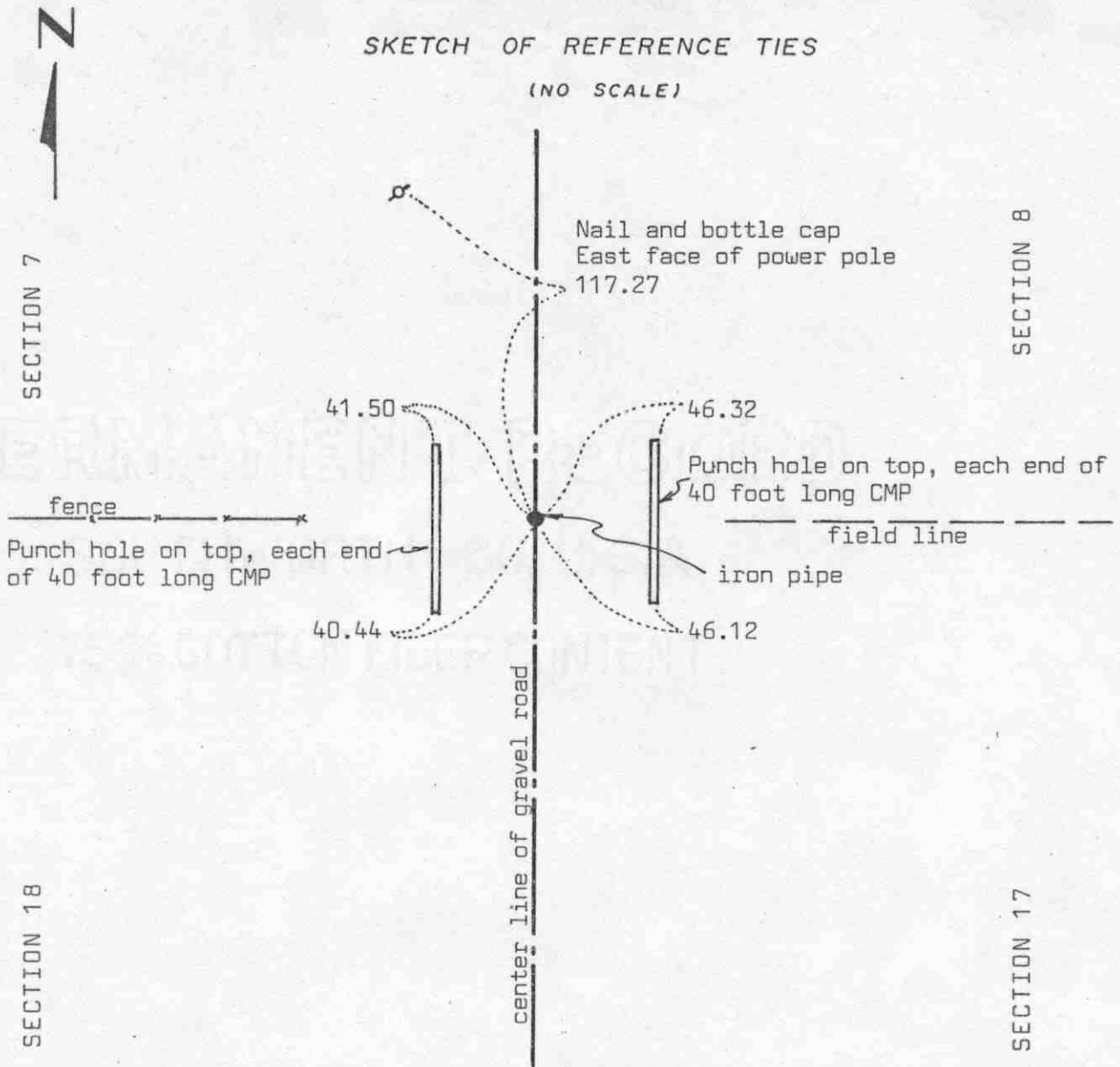
We don't know who set these stones and when, but we believe they have perpetuated the correct location of the quarter corner.

February 28, 1989. We found the monument in good condition and the reference ties good.

# Certificate of Location of Government Corner

SKETCH OF REFERENCE TIES

(NO SCALE)



Statement of evidence relative to this corner location on sheet 2

I hereby certify that this document was prepared by me or under my direct supervision.

Willard Pellinen

Willard Pellinen  
McLeod County Surveyor  
License No. 9626

Date 4/1/90

OFFICE OF THE COUNTY RECORDER  
MCLEOD COUNTY, MINNESOTA.

I hereby certify that this document was filed in this office at 4 o'clock P.M. on the 4th day of April, 1990.

Carmen Ostlie, County Recorder

By \_\_\_\_\_, Deputy

Document No. 232647

NORTHEAST corner, Section 18, Township 116 North, Range 30 West

## Certificate of Location of Government Corner

1855. Thomas Simpson of the General Land Office established this corner. He set a post, erected mound with trench, pits and charred stake. He planted osage orange seeds at each angle.

Jan 8, 1979. Adjoining land owners say the center line of the road and fences east and west have been accepted as the section lines.

August 8, 1979. We dug for the corner, John Tupa from Hutchinson with a backhoe. We dug a hole 12 feet by 6 feet by 4 feet deep and found nothing.

August 30, 1979. We set a McLeod County cast iron monument in the center line of the road in line with the fences east and west, and took reference ties.

August 19, 1981. We reset the corner using remaining reference ties. Corner had been destroyed by road construction. We took additional ties. (iron pipe set)

March 10, 1989. We found no ties remaining. We dug up the iron pipe and took new reference ties.

There being no evidence to the contrary, we accept our corner as the true northeast corner of Section 18.

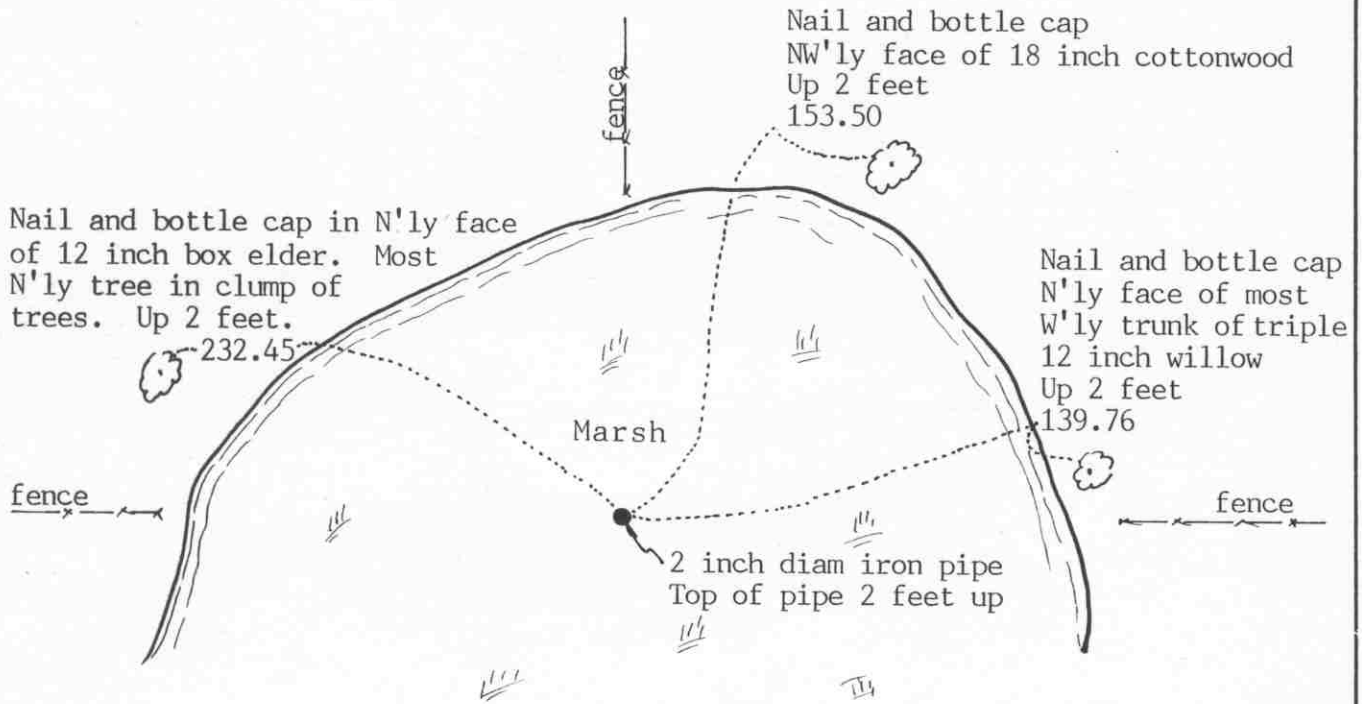
# Certificate of Location of Government Corner



SKETCH OF REFERENCE TIES

(NO SCALE)

SECTION 7



SECTION 18

Statement of evidence relative to this corner location on sheet 2

I hereby certify that this document was prepared by me or under my direct supervision.

Willard Pellinen

Willard Pellinen  
McLeod County Surveyor  
License No. 9626

Date February 4, 1991

OFFICE OF THE COUNTY RECORDER  
MCLEOD COUNTY, MINNESOTA.

I hereby certify that this document was filed in this office at 9 o'clock A.M. on the 7th day of Feb, 1991.

Carmen Ostlie, County Recorder

By \_\_\_\_\_, Deputy

Document No. 237440

## Certificate of Location of Government Corner

This corner was originally set by the government in August, 1855. Thomas Simpson set a post in a mound with trench, pits, charred stake and he planted osage orange seeds at the northeast and southwest corners of the mound.

April 25, 1933. E.L.Higgins, county surveyor, found a stone in a marsh in line with fences north and east. He measured 2670 feet to the northeast corner of the section.

January 8, 1979. Gerhard Duesterhoeft, 51 years old, has lived in the Northwest Quarter of Section 19 since 1957, said a "marker" was found at the quarter corner a few years ago in line with the fence to the north.

June 29, 1979. We found a large stone (4 feet below the water), pointed on top, in line with fences to the north, east and west. We set a 2 inch diameter iron pipe and took reference ties. This stone was within a foot of the 1933 distance by Higgins to the northeast corner of the section.

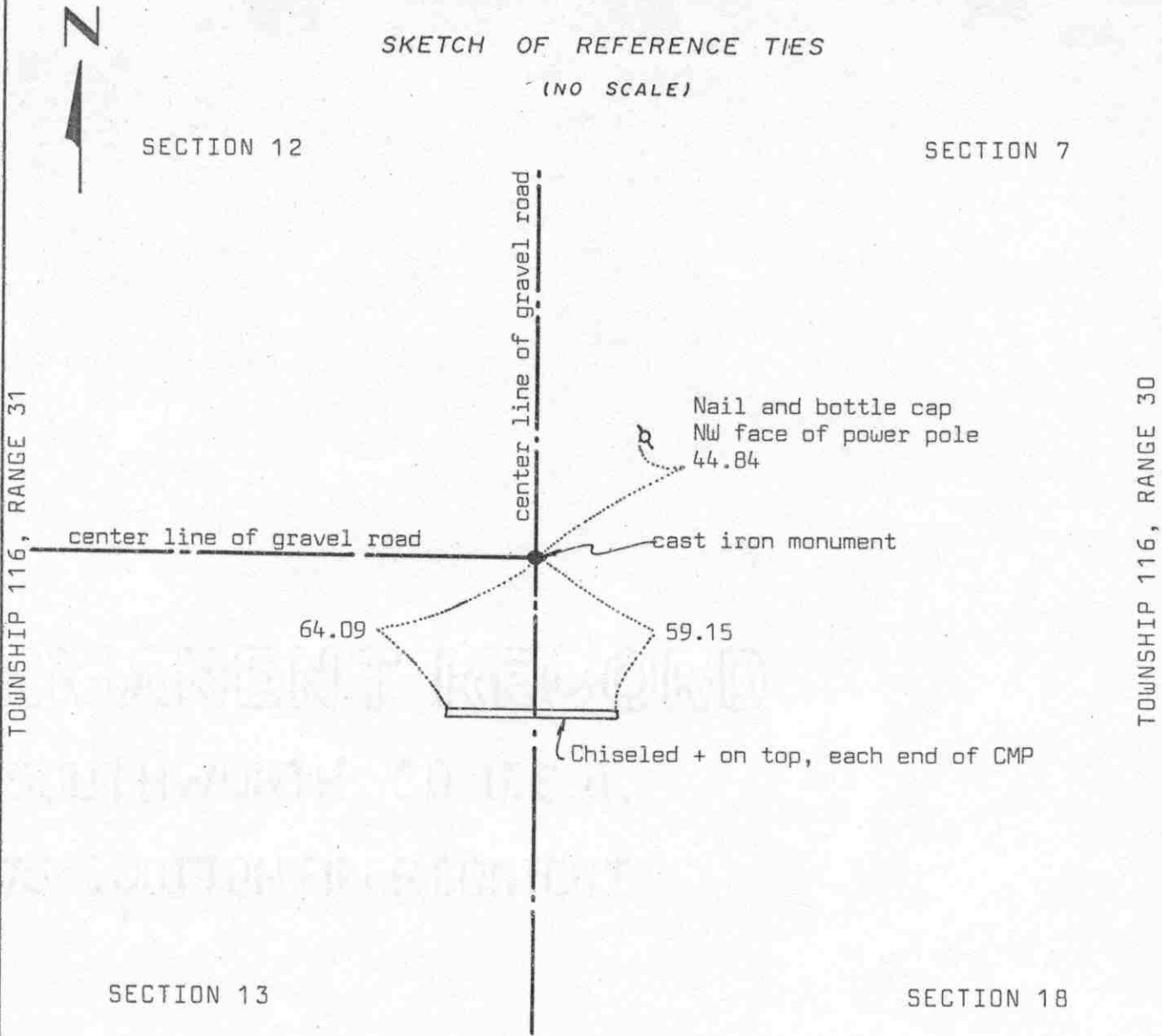
February 22, 1990. We found no ties remaining but the iron pipe still in place. We took new reference ties.

We feel the stone we found is the same stone shown in Higgins' notes of his 1935 survey and that it has perpetuated the correct location of the quarter corner.

# Certificate of Location of Government Corner

SKETCH OF REFERENCE TIES

(NO SCALE)



Statement of evidence relative to this corner location on sheet 2

I hereby certify that this document was prepared by me or under my direct supervision.

Willard Pellinen  
 Willard Pellinen  
 McLeod County Surveyor  
 License No. 9626  
 Date 4/1/90

OFFICE OF THE COUNTY RECORDER  
MCLEOD COUNTY, MINNESOTA.

I hereby certify that this document was filed in this office at 4 o'clock P.M. on the 4th day of April, 1990.

Carmen Ostlie, County Recorder  
 By \_\_\_\_\_, Deputy

Document No. 232646

NORTHWEST                      corner, Section 18, Township 116 North, Range 30 West

## Certificate of Location of Government Corner

This corner was originally established by the General Land Office in 1855. John Ryan set a post, in a marsh, deposited charcoal, dug a pit 8 links south and built a mound of earth and sod.

July 31, 1981. Dale Boklep, land surveyor, found a steel post with a hub and ribbon down 2 feet below the road surface at the center line intersection of the roads. He set a 3/4 inch iron pipe over the steel post.

September 10, 1985. We found the iron pipe set by Boklep and took reference ties.

November 11, 1985. We talke with Merlin Miller and his grandmother. Mr. Miller has lived in Section 18 all his life as his grandmother who is 93 years old. They both agree the center lines of the roads have been accepted as being the section lines.

May 13, 1986. We replaced the iron pipe with a McLeod County cast iron monument.

March 10, 1989. We found the monument and reference ties still good.

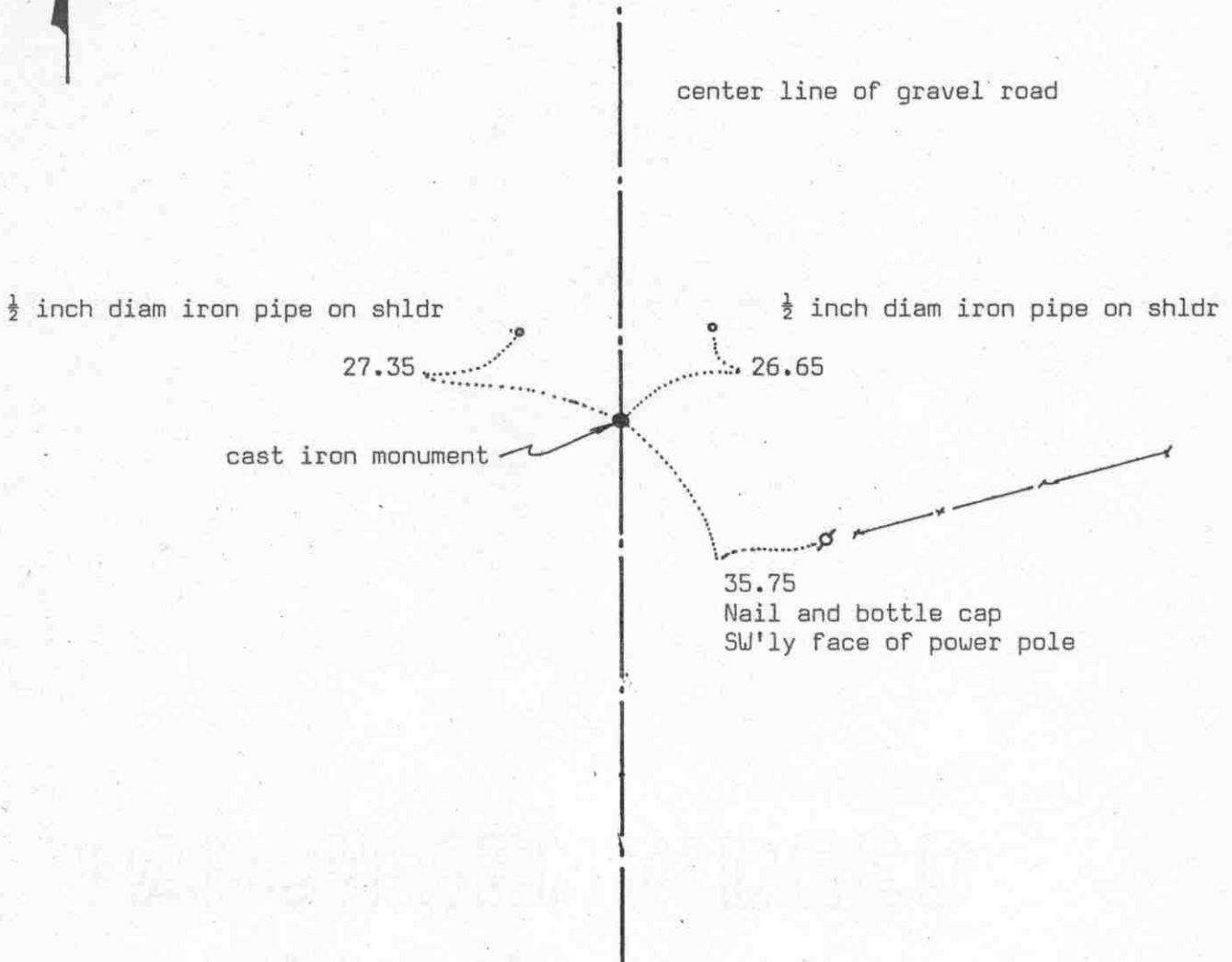
We accept the location of the steel post found by Boklep as being the true northwest corner of Section 18.

# Certificate of Location of Government Corner



## SKETCH OF REFERENCE TIES

(NO SCALE)



Statement of evidence relative to this corner location on sheet 2

I hereby certify that this document was prepared by me or under my direct supervision.

Willard Pellinen

Willard Pellinen  
McLeod County Surveyor  
License No. 9626

Date 1/6/90

OFFICE OF THE COUNTY RECORDER  
MCLEOD COUNTY, MINNESOTA.

I hereby certify that this document was filed in this office at 2 o'clock P.M. on the 8th day of February, 1990.

Carmen Ostlie, County Recorder

By \_\_\_\_\_, Deputy

Document No. 231867



WEST QUARTER corner, Section 18, Township 116 North, Range 30 West

## Certificate of Location of Government Corner

This corner was originally set by John Ryan of the General Land Office. He "set quarter section post, deposited charcoal, dug pits and trench, built mound and planted osage orange seeds at corners of mound."

1971. McCombs Knutson Associates (Dickman Knutson, county surveyor) dug for the corner but found nothing.

August 3, 1981. Dale Boklep, surveyor, set a 3/4 inch diam. iron pipe on line and half way between section corners. Fence to the east is about 14 feet south of the corner but about 1/4 mile east and up to the east quarter corner the fence is very nearly on line.

September 10, 1985. We measured the west line of Section 18 and found the iron pipe set by Dale Boklep.

May 13, 1986. We replaced the iron pipe with a McLeod County cast iron monument and took reference ties.

February 28, 1989. We found the monument in good condition and the reference ties good.

We feel this is the correct location of the quarter corner. Knutson dug for the corner and found nothing and this corner fits the occupation lines, the center line of the road and fence along the east-west quarter line.